



WHO we ARE

The Wildlife Education Foundation (WEF) is an apolitical, Non-Profit Organisation (reg. no: 078-886 NPO, PBO: 930039447) founded and managed since 2010 by a group of conservation and education professionals with a love and passion for wildlife and nature as well as the preservation of biodiversity and our natural heritage.

As a registered NPO and PBO any sponsorship and/or donation to the WEF are exempt by SARS from donation tax and/or estate duty in terms of the respective Income and Estate Duty Acts. The WEF is also a LEVEL 4 BEE Contributor and a 100% contributor towards Preferential Procurement.

OUR VISION

It is the vision of the WEF that through our wildlife and environmental educational efforts, the natural environment and biodiversity will be respected, valued and conserved by an informed and responsible human population, ensuring green living and a healthy planet TODAY and for generations to come.

Knowledge – Respect – Compassion – Care – CONSERVE

WEF Team

WEF Founder & Executive Members



Dr Madelein J Grundlingh - Founder & Chairperson
 Dr Louis Swanepoel - SA Dept of Education
 Zakiya Fareed - Formerly SANParks

WEF Patrons



DILANA - International Musician & Actrise
 Maritza Grundlingh - Film Maker, Artist & Musician
 Michelle Garforth-Venter - TV Producer & Presenter, Actrise



Rudolf du Toit - SA Actor & Conservationist
 Tarzan DeWet du Toit - SA Actor & Conservationist
 Jonathan Pienaar - SA Actor & Film Producer

[CLICK HERE](#) to read more



Because
EVERY life
MATTERS



"We cannot "SAVE" the world from the DESTRUCTION & PAIN caused by IGNORANT & SELFISH HUMANS - but we CAN SHARE KNOWLEDGE and change IGNORANCE, NEGATIVE ATTITUDES & ACTIONS - ONE HERO at a time!"

(Dr MJ Grundlingh)

WEF Founder

Dr. Madelein J Grundlingh is a professionally qualified and experienced zoologist and conservation educationist, lecturer, former biology teacher, researcher, scriptwriter, author, artist, graphic designer, producer of nature/environmental television programmes and public speaker.

Apart from various other awards, dr. Grundlingh has been awarded SANParks' prestigious KUDU Award for her individual contribution towards environmental education and capacity building in South Africa.

After years of designing & developing educational resource material for amongst others, the Kids In Kruger projects as part of the Mandela conservation initiative, dr Grundlingh now applies her skills and experience in developing the various educational resources, projects, courses and programs for the WEF.



The greatest threat to our planet is the belief that someone else will

BE the HERO who CARES

- Dr MJ Grundlingh



Dr MADELEIN J GUNDLINGH

CONSERVATION EDUCATION

WILDLIFE PUBLICATIONS



WILDLIFE & ENVIRONMENTAL REALITY . . .

Our planet's biodiversity and natural ecosystems are presently being destroyed at a horrific rate – **directly and indirectly by destructive human behaviour.**

The magnitude of this devastating human onslaught against the very planet that sustains us, is mind-blowing and can only be attributed to a **HUGE lack of knowledge and compassion.**

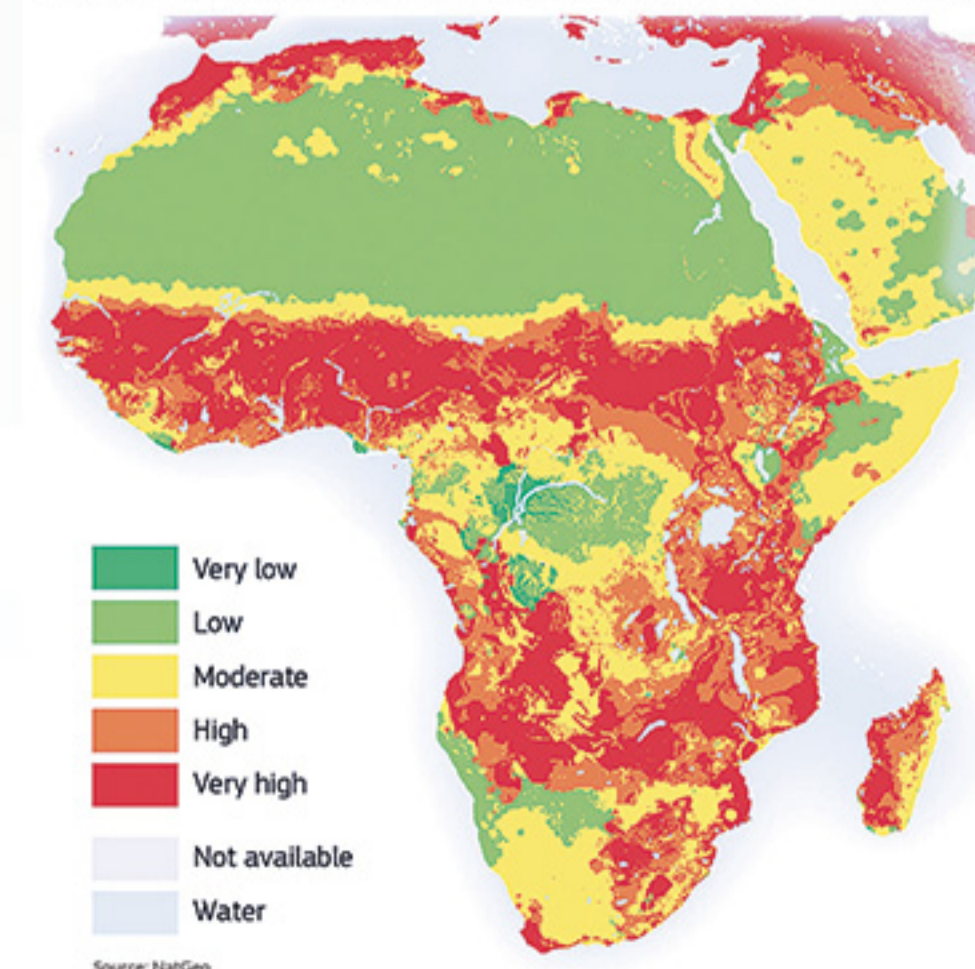
Sadly, life on earth are being destroyed by the selfish, greedy and power-driven motivation and actions of one species . . . **UNkind MAnkind**

- * **South Africa's natural environment** has, over the past 20-30 years, deteriorated nearly the fastest of most countries in the world, ranking 128 out of the 132 countries measured ((EPI), with Iraq last on the list.
- * During the past 90 years we have **decreased the numbers of large mammals in Africa by between 80 and 98%**;
- * Over-fished 20 of South Africa's key commercial marine fish species;
- * Destroyed more than 55% of our wetlands;
- * Critically endangered 54% of our river systems;
- * Degraded our arable land and soil to among the lowest quality in Africa;
- * South Africa now has an **ecological footprint higher than the global average** - ranking 93 (and dropping) out of 146 countries with regard to our Environmental Sustainability Index!

DECLINE (%) in Africa's large mammal numbers

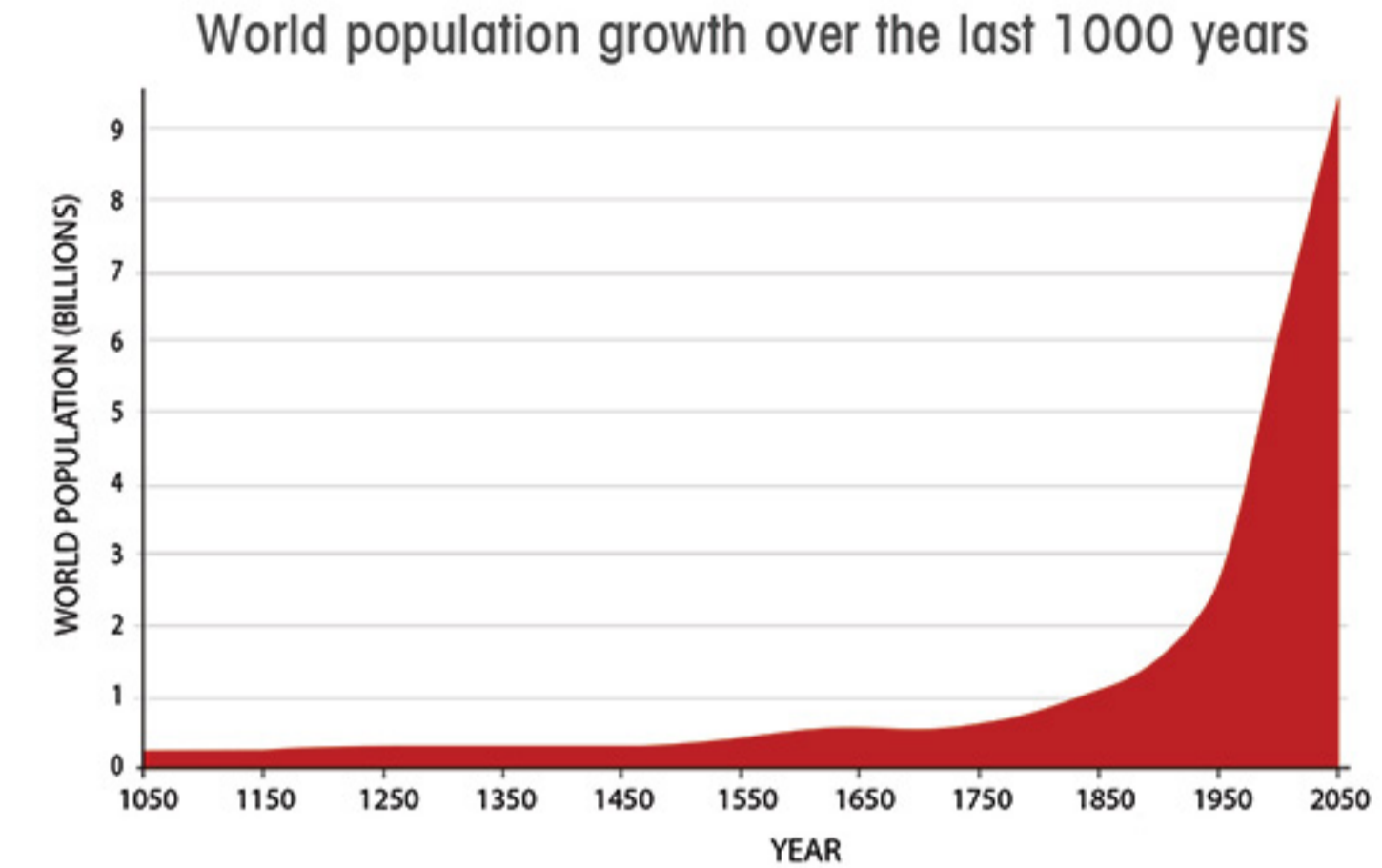
African elephant	- 98%
African rhinos	- 97%
Giraffe	- 91%
Cheetah	- 97%
Lion	- 98%
African wilddog	- 98%

HABITAT DESTRUCTION & BIODIVERSITY THREATS



WHY we DO what we do

The deterioration of our environment means a decrease in living standards and the quality of life for ALL (e.g. extra carbon taxes, higher fuel and food prices, less available money to/from consumers, economic instability and much more).



"We cannot "SAVE" the world from the DESTRUCTION & PAIN caused by IGNORANT & SELFISH HUMANS

HUMAN ACTIONS



- but we CAN SHARE KNOWLEDGE and change IGNORANCE, NEGATIVE ATTITUDES & ACTIONS

- ONE HERO at a time!"

(dr MJ Grundlingh)

BE the HERO who CARES

visit: wild.org.za



WHAT we DO - Our Projects

The WEF's mission is to share wildlife, conservation and environmental knowledge with as many people as possible through our wildlife and conservation educational programmes and projects

- [CLICK HERE](#) to view more



2021 HERO Challenge

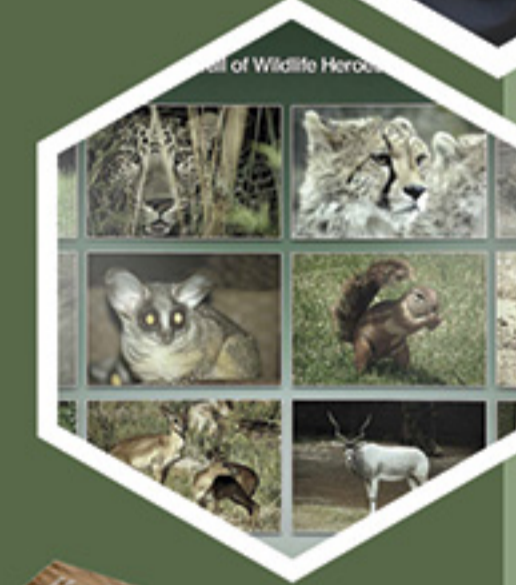
WEF's **HERO** CHALLENGE

We may not be able to visit schools due to COVID restrictions - but with YOUR help - we can still get educational resources to schools & learners

- ONE CHILD / STUDENT at a time!

HOW YOU CAN HELP

Purchase/sponsor one or more wildlife books and TOGETHER we can provide 2,021 less privilege learners/students and schools with wildlife books and educational resource packs before the end of 2021



WALL of WILDLIFE HEROES

- by supporting the WEF's HERO Challenge - YOU and/or YOUR school, organisation or business will be added to the WALL of WILDLIFE HEROES

SUPPORT CONSERVATION through EDUCATION

- the ONLY long-term solution to our planet's conservation challenges

BE the HERO who CARES

TO SUPPORT - [CLICK HERE](#)





Presentations & Workshops

AUDIOVISUAL + HANDS-ON

Since 2010 the WEF has visited and done **Wildlife and Environmental Conservation presentations and workshops** (in English/Afrikaans) at more 80 schools, other organisations and corporate events - reaching more than 130 000 learners, educator and other youth/adults per year.

- * **WEF ENVIRO-HERO Presentations, are:**
Exciting educational audiovisual presentations, Varies between 45 - 90 minutes (flexible), We can come to YOUR school/organisation, Professional & highly qualified WEF presenter(s)

- [CLICK HERE to View our Gallery](#)

- * Other popular topics presented, include:
"Importance of Human-Nature Connection",
"Nature-Deficit Disorder in Children".

- * Most popular corporate **motivational** presentations:
"LESSONS from LIONS",
"Rediscovering Ourselves in Nature" and
"Survival of the HUMAN species"

- [CLICK HERE for more info/to Book](#)

(NB: Cost varies depending on number of people, location, etc.)



Wildlife/ENVIRO Campus

ACCREDITED ONE TO FIVE DAY CERTIFICATE COURSES

Below is a list of some of the available WEF Courses

ONE DAY COURSES

(Certificate Course)

1

* Available courses (lectures + practical section):

- Predator Course 1A
- Herbivore Course 1A
- Reptile Course 1A
- Animal Behaviour 1A
- Biodiversity 1A
- African Mammals 1A

2

TWO DAY COURSES

(Certificate Course)

* Available courses (lectures + practical section):

- African Mammal Course 2A
- Introducing to African Birds & Birding 2A
- Introduction to Field Guiding 2A

5

FIVE DAY PROGRAM

(Accredited Certificate)

* Available options (lectures, practicals, excursions):

- Introduction to Wildlife Studies & Research 3A
- Introduction to Wildlife Voluntring 3A

WHO can enrol ?

Any person with a basic knowledge of animals, wildlife and nature (minimum 10 people/course).

WHERE is the venue for attending WEF courses?

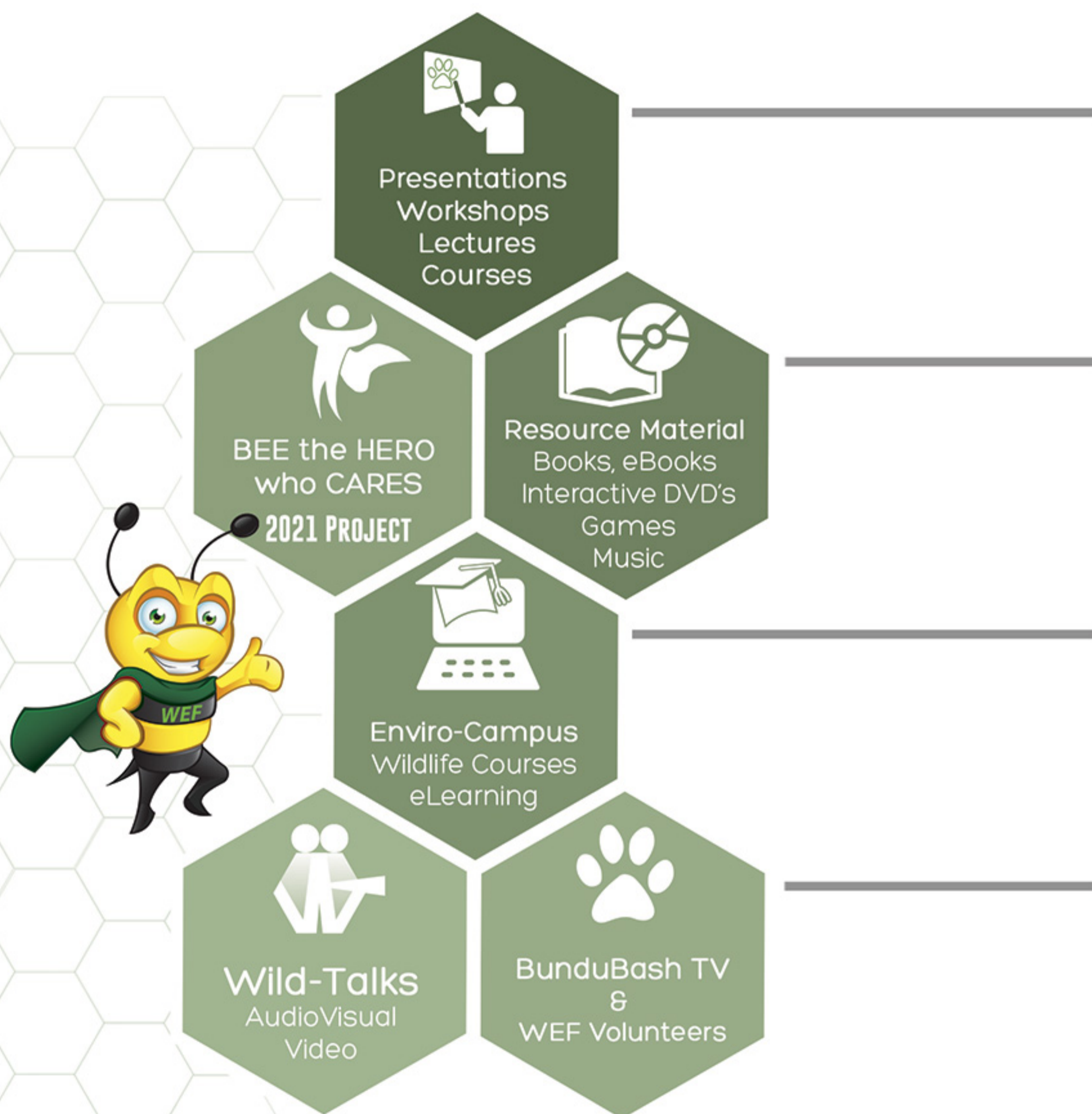
Mostly at the Ukutula Conservation Centre & Game Reserve (± 60 minutes drive from Lanseria Airport), but other venues/locations can be arranged.

WHAT are the costs involved?

Visit our website for course fees, dates & more detail: [CLICK HERE](#) (campus.wild.org.za)

NEED MORE INFORMATION - visit our website or send us an email (see below)





WEF's CONSERVATION IMPACT:

130 000/yr
Students reached

6 800/yr
Educators reached

28 978
Resources Supplied

Knowledge – Respect – Compassion – Care – CONSERVE

HOW to get INVOLVED

SUPPORT CONSERVATION THROUGH EDUCATION

Book ... a WEF presentation, workshop, lecture or course for yourself, your school, organisation and/or your business
... [CLICK HERE](#) to read more

Purchase/Sponsor ... a wildlife book or educational wildlife game for you, your family, friends, a school, a learner or student & corporate partners are welcome to join us
... [CLICK HERE](#) to read more

Enrol ... for an accredited WEF wildlife course or book a course for your kids, school, organisation or staff
... [CLICK HERE](#) to read more

Join/Sponsor ... a WEF student/volunteer experience, a BunduBash TV project or organise a WEF WildTalk event
... [CLICK HERE](#) to read more

Should you want to make any other contribution, sponsorship or partner with the WEF for a specific event or project, just send us an email and we'll contact you back ASAP.

Contact us:



hero@wild.org.za



wild.org.za